

F

E

D

C

B

A

8

7

6

5

4

3

2

1

REVISIONS				
ZONE	REV.	DESCRIPTION	DATE	APPROVED
	A	INITIAL RELEASE	6/27/2014	WHO
E6	B	CHANGE HOLE SIZE CHANGE MATERIAL THICKNESS	8/4/2014	WHO

F

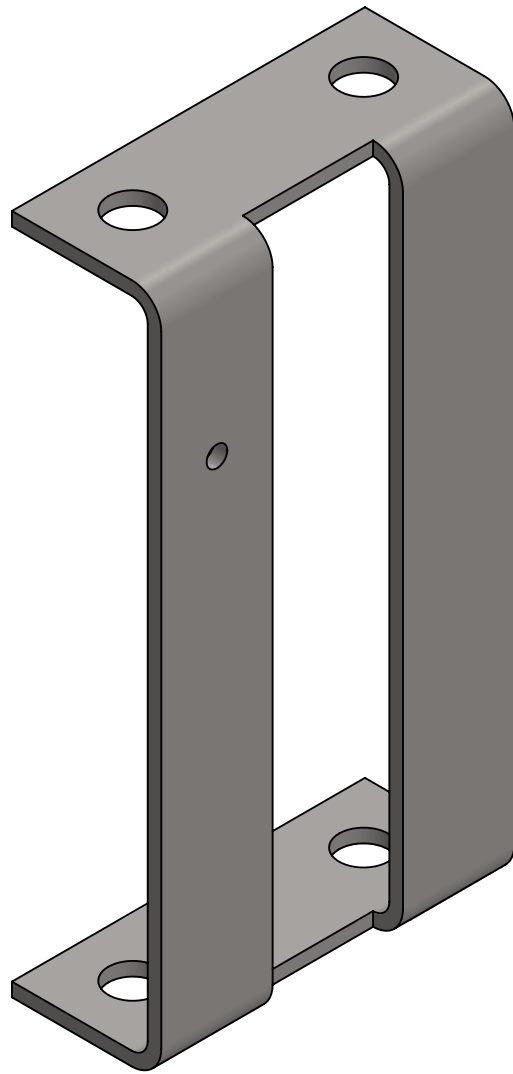
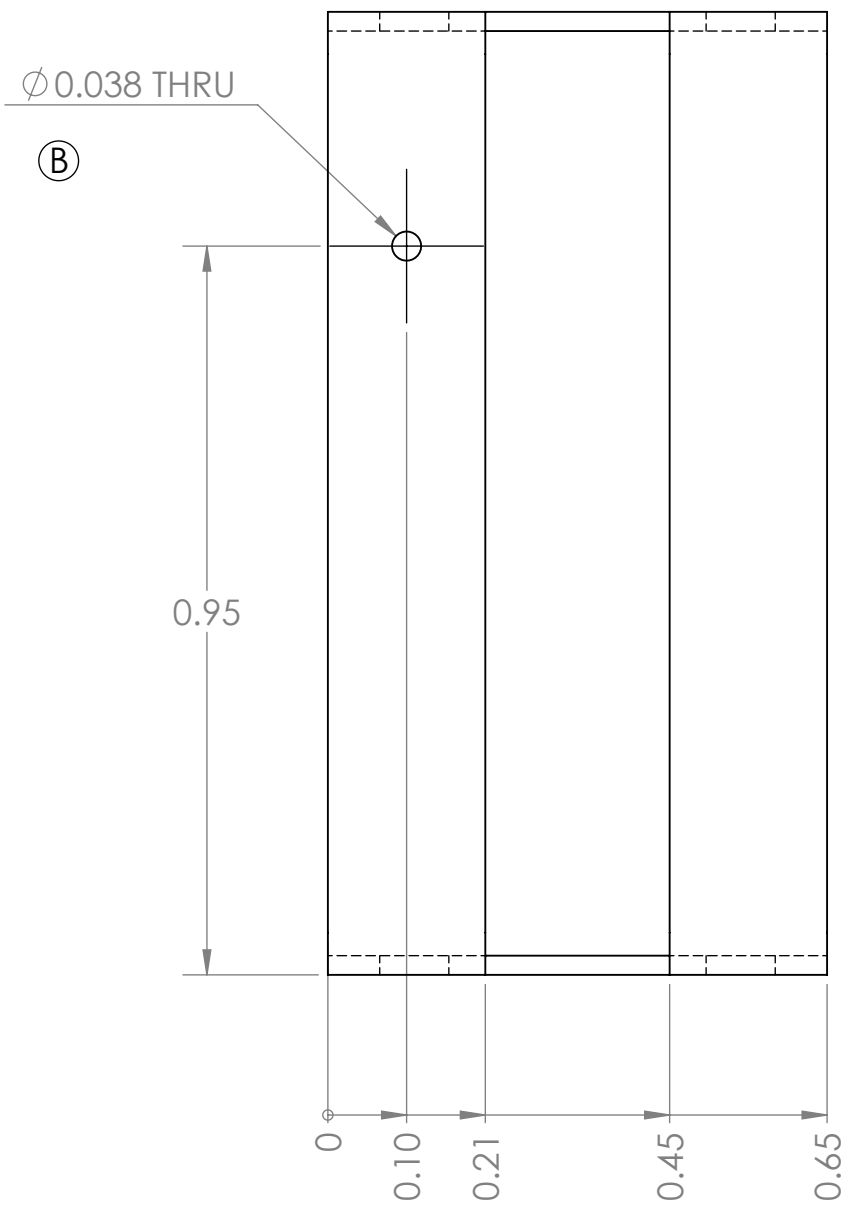
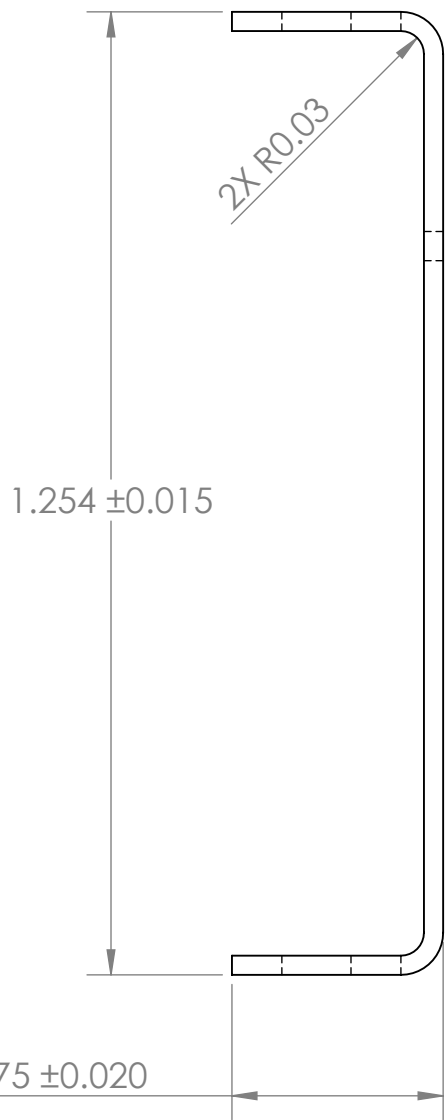
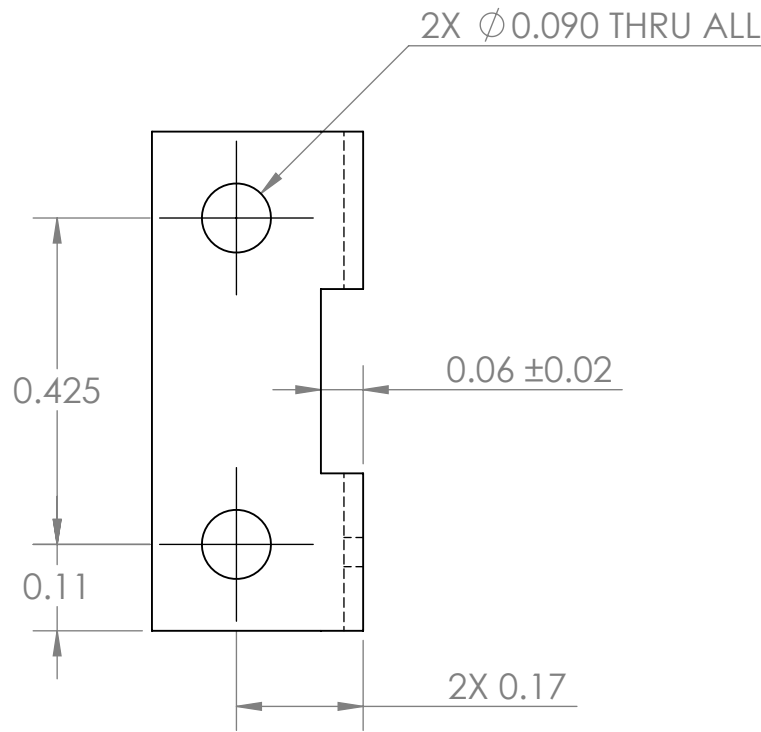
E

D

C

B

A



NOTES	
1	Material: SS304, 0.025 INCH THICK
2	FINISH: PLAIN (SEE NOTE 3)
3	DEBURRING: REMOVE ALL BURRS AND SHARP EDGES. EDGES SHALL BE SMOOTH TO THE TOUCH. RECOMMENDED METHOD: VIBRATORY TUMBLE,ROUNDING EDGES TO RADIUS OF .005 - .010 INCH.
4	PARTS MUST BE CLEAN (FREE OF DUST, CHIPS, AND MACHINE OIL).
5	PARTS MUST BE RoHS COMPLIANT.
6	PACKAGING: BAG AND TAG WITH EMS PN., REVISION NUMBER, MANUFACTURER NAME OR ID, AND DATE OF MANUFACTURE.
7	ORIGINAL CAD FILE FOR PART (SOLIDWORKS 2015) OR EXPORT DATA (IGES, ETC.), CAN BE PROVIDED UPON REQUEST.

PROPRIETARY AND CONFIDENTIAL  
THE INFORMATION CONTAINED IN THIS  
DRAWING IS THE SOLE PROPERTY OF  
EVIL MAD SCIENCE LLC. ANY  
REPRODUCTION IN PART OR AS A WHOLE  
WITHOUT THE WRITTEN PERMISSION OF  
EVIL MAD SCIENCE LLC IS PROHIBITED.

		UNLESS OTHERWISE SPECIFIED:		NAME	DATE	EVIL MAD SCIENCE LLC www.evilmadscientist.com			
		DIMENSIONS ARE IN INCHES TOLERANCES: FRACTIONAL ± ANGULAR: MACH±    BEND ± TWO PLACE DECIMAL    ±.010 THREE PLACE DECIMAL    ±.005	DRAWN			TITLE:	WCBC VERTICAL STRUT		
			CHECKED						
			ENG APPR.						
			MFG APPR.						
		INTERPRET GEOMETRIC TOLERANCING PER:	Q.A.			EMS PART No.:	61-0095		
		MATERIAL	COMMENTS:						
		FINISH	ENGINEERING CONTACT: Windell Oskay windell@evilmadscientist.com (408) 462-1064			SIZE	DWG. NO.	REV	
NEXT ASSY	USED ON					C	WCBC Vertical Strut B		B
APPLICATION		DO NOT SCALE DRAWING	SCALE: 4:1    WEIGHT:    SHEET 1 OF 1						